

### Cross-Tabulate

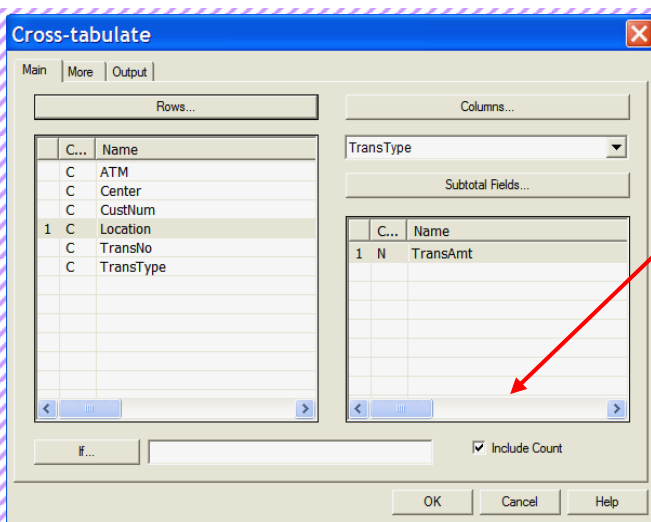
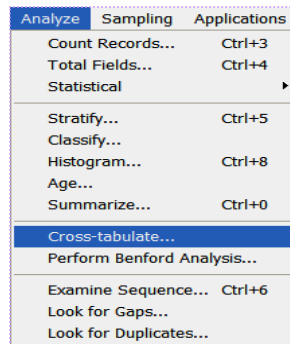
For users who are already comfortable with using Pivot Table in Excel, ACL has a similar command: **Cross-tabulate**.

Cross-tabulate lets you analyse character fields by setting them in rows and columns. You can produce various summaries, explore areas of interest, and subtotal numeric fields.

For example, below is an ATM transaction file. You want to know the total amount (as well as the transaction count) of withdrawal and deposit transaction, respectively, in various locations.

ATM	Location	Type	Transaction Amount
27	Robson Street	WDL	340.00
28	Lamar Boulevard	WDL	50.00
16	Oak Street	WDL	430.00
28	Lamar Boulevard	WDL	210.00
27	Robson Street	WDL	360.00
27	Robson Street	DEP	5,231.36
19	Linden Avenue	DEP	5,334.87
27	Robson Street	WDL	110.00
23	Magnolia Way	WDL	360.00
27	Robson Street	WDL	20.00
27	Robson Street	DEP	6,976.89
27	Robson Street	DEP	800.87
16	Oak Street	WDL	350.00
27	Robson Street	WDL	390.00
28	Lamar Boulevard	DEP	622.92
23	Magnolia Way	WDL	40.00
19	Linden Avenue	DEP	5,602.60
27	Robson Street	WDL	430.00
28	Lamar Boulevard	WDL	330.00
16	Oak Street	WDL	160.00

To create the above mentioned 2-dimensional report, use Cross-Tabulate command.



Select the field to display on rows and columns, then select the numeric field(s) that you want to sum up under the Subtotal Fields. To include record count, choose the **"Include Count"** option.

## Prodigy's Useful ACL Tips #9 - Cross-Tabulate

### Result:

Location	TransAmt TransType DEP	Count DEP	TransAmt TransType WDL	Count WDL
<a href="#">Congress Street</a>	804,939.32	<a href="#">165</a>	46,520.00	<a href="#">207</a>
<a href="#">Eighth Avenue</a>	1,542,069.38	<a href="#">312</a>	170,100.00	<a href="#">669</a>
<a href="#">Lamar Boulevard</a>	676,818.69	<a href="#">143</a>	31,370.00	<a href="#">135</a>
<a href="#">Linden Avenue</a>	1,565,339.57	<a href="#">299</a>	84,080.00	<a href="#">344</a>
<a href="#">Magnolia Way</a>	1,479,654.82	<a href="#">310</a>	135,730.00	<a href="#">521</a>
<a href="#">Oak Street</a>	573,349.21	<a href="#">124</a>	61,020.00	<a href="#">244</a>
<a href="#">Robson Street</a>	3,154,213.24	<a href="#">650</a>	216,040.00	<a href="#">857</a>
<b>Totals</b>	9,796,384.23	2,003	744,860.00	2,977

You may **drill down** to transactional data of interest by clicking on the corresponding hyperlink.

Click on the graph tab below the result, the presentation of information is available in graph format. Note that drilling down from a graph is also possible by selecting the bar of interest.

